

**DIRECTIONS TO THE
2011 QCM
RELAY EXCHANGE ZONES
(Updated as of September 2, 2011)**

Question: Is there any transportation provided to and from the Relay Exchange Zones and the Start/Finish area?

Answer: We currently do not provide transportation to and from the Relay Exchange Zones.

Participants and their drivers are asked to leave for their exchange zones WELL IN ADVANCE, to allow lots of time to find a parking spot and to be ready to go.

Basically, if you are running the second leg of the relay...and you are still near the starting line listening to "O Canada"...you're already too late!

Remember, many of the obvious routes you would normally take to get to these locations may be blocked to traffic, since our participants are running on these very same routes. Plan your driving route well in advance to avoid the course.

**PLEASE DO NOT
DRIVE ALONG THE COURSE
TO GET TO YOUR
RELAY EXCHANGE ZONE.**

Where are the Relay Exchange Zones and how do I get to them?

The Relay legs and Exchange Zones are located at:

Leg 1. – Starts at marathon starting line – Distance approx. 7 km

- Starts at the starting line next to the T.C. Douglas Building.
- Distance: approx. 7 km

Leg 2. – Starts at Relay Exchange Zone #1 - Distance approx. 10.5 km



- Relay Leg #2 starts on Wascana Drive, just to the NORTHWEST of the Science Centre.
- Distance: approx. 10.5 km

- **To get to Relay Exchange #1 (and #3) from the Start/Finish Area:**
 - Go North on Albert Street to College Avenue
 - East (right) on College Avenue to Broad Street
 - South (right) on Broad Street to Broadway Avenue
 - East (left) on Broadway Avenue to Winnipeg Street
 - South (right) on Winnipeg Street
 - Winnipeg Street curves to the left (heading east), and turns into 19th Avenue
 - Stop and park on 19th Avenue or on nearby streets.
 - Walk south across 19th Avenue to Wascana Drive. The Relay Exchange Zone will be on Wascana Drive to your right, just Northwest of the main entrance road to the Saskatchewan Science Centre/Kramer IMAX Theatre.
 - DO NOT DRIVE OR PARK ON WASCANA DRIVE.
 - BROAD STREET FROM QUINN DRIVE TO LAKESHORE DRIVE WILL BE CLOSED FROM 7:45 AM UNTIL 2:30 PM. You CANNOT reach this Relay Exchange Zone by using Broad Street.

Leg 3. – Starts at Relay Exchange Zone #2 – Distance approx. 7 km





- Relay Leg #3 starts on path just East of Conexus Arts Centre, near the waterfowl display ponds.
- Distance: approx. 7 km (NEW for 2011)

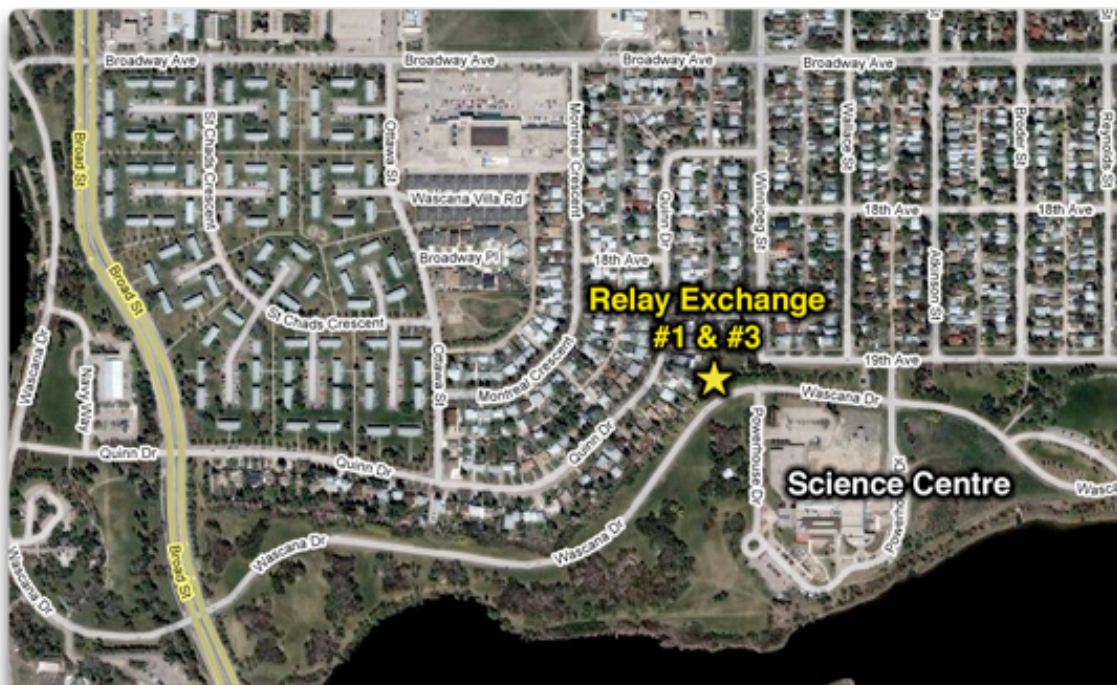
- **To get to Relay Exchange #2 (and #4) from the Start/Finish Area:**
 - East on 23rd Avenue
 - Cross Hillsdale Street and continue on to Wascana Parkway
 - Go straight across Wascana Parkway onto Lakeshore Drive
 - Lakeshore Drive curves to the left, taking you to the Conexus Arts Centre parking lot on your left-hand side
 - Park in the Conexus Arts Centre parking lot
 - Walk across Lakeshore Drive to the Relay Exchange Zone, which is located on the pathway/sidewalk near the waterfowl display ponds (the fenced in area full of ducks and geese and other waterfowly-type things).
 - BROAD STREET FROM QUINN DRIVE TO LAKESHORE DRIVE WILL BE CLOSED FROM 7:45 AM UNTIL 2:30 PM. You CANNOT reach this Relay Exchange Zone by using Broad Street.

- **To get there from Relay Exchange Zone #1 (and #3):**
 - South on 19th Avenue as it curves to the right (north) becoming Winnipeg Street.

- North on Winnipeg Street to Broadway Avenue
- West (left) on Broadway Avenue to Broad Street
- North (right) on Broad Street to College Avenue
- West (left) on College Avenue to Albert Street.
- South (left) on Albert Street to 23rd Avenue.
- East (left) on 23rd Avenue.
- Cross Hillsdale Street and continue on to Wascana Parkway
- Go straight across Wascana Parkway onto Lakeshore Drive
- Lakeshore Drive curves to the left, taking you to the Conexus Arts Centre parking lot on your left-hand side
- Park in the Conexus Arts Centre parking lot
- Walk across Lakeshore Drive to the Relay Exchange Zone, which is located on the pathway/sidewalk near the waterfowl display ponds (the fenced in area full of ducks and geese and other waterfowl-type things).
- BROAD STREET FROM QUINN DRIVE TO LAKESHORE DRIVE WILL BE CLOSED FROM 7:45 AM UNTIL 2:30 PM. You CANNOT reach this Relay Exchange Zone by using Broad Street.

**Leg 4. – Starts at Relay Exchange Zone #3 - Distance approx. 14.2 km
(Same location as Relay Exchange Zone #1)**





- Relay Leg #4 starts on Wascana Drive, just to the NORTHWEST of the Science Centre.
- Distance: approx. 14.2 km (NEW for 2011)

- **To get to Relay Exchange #3 from the Start/Finish Area:**
 - Go North on Albert Street to College Avenue
 - East (right) on College Avenue to Broad Street
 - South (right) on Broad Street to Broadway Avenue
 - East (left) on Broadway Avenue to Winnipeg Street
 - South (right) on Winnipeg Street
 - Winnipeg Street curves to the left (heading east), and turns into 19th Avenue
 - Stop and park on 19th Avenue or on nearby streets.
 - Walk south across 19th Avenue to Wascana Drive. The Relay Exchange Zone will be on Wascana Drive to your right, just Northwest of the main entrance road to the Saskatchewan Science Centre/Kramer IMAX Theatre.
 - DO NOT DRIVE OR PARK ON WASCANA DRIVE.
 - BROAD STREET FROM QUINN DRIVE TO LAKESHORE DRIVE WILL BE CLOSED FROM 7:45 AM UNTIL 2:30 PM. You CANNOT reach this Relay Exchange Zone by using Broad Street.
 -

- **To get there from Relay Exchange Zone #2:**
 - Exit Conexus Arts Centre parking lot and turn South (left) onto Wascana Drive, as it curves all the way around the back of the Conexus Arts Centre until you come to the intersection with Wascana Parkway.
 - Go straight across Wascana Parkway onto 23rd Avenue. You are now heading West.
 - Cross Hillsdale Avenue and continue straight on to Albert Street.
 - Turn North (right) at Albert Street to College Avenue.
 - East (right) on College Avenue to Broad Street
 - South (right) on Broad Street to Broadway Avenue
 - East (left) on Broadway Avenue to Winnipeg Street
 - South (right) on Winnipeg Street
 - Winnipeg Street curves to the left (heading east), and turns into 19th Avenue
 - Stop and park on 19th Avenue or on nearby streets.
 - Walk south across 19th Avenue to Wascana Drive. The Relay Exchange Zone will be on Wascana Drive to your right, just Northwest of the main entrance road to the Saskatchewan Science Centre/Kramer IMAX Theatre.
 - DO NOT DRIVE OR PARK ON WASCANA DRIVE.
 - BROAD STREET FROM QUINN DRIVE TO LAKESHORE DRIVE WILL BE CLOSED FROM 7:45 AM UNTIL 2:30 PM. You CANNOT reach this Relay Exchange Zone by using Broad Street.

(Continued on next page)

**Leg 5. – Starts at Relay Exchange Zone #4 - Distance approx. 3.5 km
(Same location as Relay Exchange Zone #2)**



- Relay Leg #5 starts on path just East of Conexus Arts Centre, near the waterfowl display ponds.
- Distance: approx. 3.5 km
- THIS IS THE FINAL RELAY LEG AND IT ENDS AT THE FINISH LINE.

- **To get to Relay Exchange #4 from the Start/Finish Area:**
 - East on 23rd Avenue

- Cross Hillsdale Street and continue on to Wascana Parkway
 - Go straight across Wascana Parkway onto Lakeshore Drive
 - Lakeshore Drive curves to the left, taking you to the Conexus Arts Centre parking lot on your left-hand side
 - Park in the Conexus Arts Centre parking lot
 - Walk across Lakeshore Drive to the Relay Exchange Zone, which is located on the pathway/sidewalk near the waterfowl display ponds (the fenced in area full of ducks and geese and other waterfowly-type things).
 - BROAD STREET FROM QUINN DRIVE TO LAKESHORE DRIVE WILL BE CLOSED FROM 7:45 AM UNTIL 2:30 PM. You CANNOT reach this Relay Exchange Zone by using Broad Street.
- **To get there from Relay Exchange Zone #3:**
- South on 19th Avenue as it curves to the right (north) becoming Winnipeg Street.
 - North on Winnipeg Street to Broadway Avenue
 - West (left) on Broadway Avenue to Broad Street
 - North (right) on Broad Street to College Avenue
 - West (left) on College Avenue to Albert Street.
 - South (left) on Albert Street to 23rd Avenue.
 - East (left) on 23rd Avenue.
 - Cross Hillsdale Street and continue on to Wascana Parkway
 - Go straight across Wascana Parkway onto Lakeshore Drive
 - Lakeshore Drive curves to the left, taking you to the Conexus Arts Centre parking lot on your left-hand side
 - Park in the Conexus Arts Centre parking lot
 - Walk across Lakeshore Drive to the Relay Exchange Zone, which is located on the pathway/sidewalk near the waterfowl display ponds (the fenced in area full of ducks and geese and other waterfowly-type things).
 - BROAD STREET FROM QUINN DRIVE TO LAKESHORE DRIVE WILL BE CLOSED FROM 7:45 AM UNTIL 2:30 PM. You CANNOT reach this Relay Exchange Zone by using Broad Street.